



## 6.0 Accessories

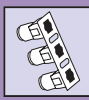
### 6.1 Plastic Mounting Accessories

| FACEPLATES                     |     | BLANKS            |     |
|--------------------------------|-----|-------------------|-----|
| <b>Alpha Snap</b>              |     | <b>Alpha Snap</b> |     |
| Double Gang Bevelled Faceplate | 252 | Half Blanks       | 257 |
| Single Gang Bevelled Faceplate | 252 | Quarter Blanks    | 257 |
| Double Gang Flat Faceplate     | 253 | <b>Easy Clip</b>  |     |
| Single Gang Flat Faceplate     | 253 | Half Blanks       | 258 |
|                                |     | Quarter Blanks    | 258 |
| <b>Easy Clip</b>               |     | <b>MegaBand</b>   |     |
| Double Gang Bevelled Faceplate | 254 | Half Blanks       | 259 |
| Single Gang Bevelled Faceplate | 254 | Quarter Blanks    | 259 |
| Double Gang Flat Faceplate     | 255 | <b>6C</b>         |     |
| Single Gang Flat Faceplate     | 255 | Blank             | 260 |
| <b>MegaBand</b>                |     |                   |     |
| Double Gang Flat Faceplate     | 256 |                   |     |
| Single Gang Flat Faceplate     | 256 |                   |     |

| MODULES AND ADAPTORS     |     |
|--------------------------|-----|
| <b>GigaBand</b>          |     |
| Empty Single Category 6  | 261 |
| <b>Alpha Snap</b>        |     |
| Empty Single Category 5e | 261 |
| <b>Easy Clip</b>         |     |
| Angled Module            | 262 |
| <b>6C</b>                |     |
| Angled Module            | 262 |
| 6C to Alpha Snap Adaptor | 260 |
|                          |     |
| <b>BACK BOXES</b>        |     |
| 27mm Single Back Box     | 263 |
| 37mm Double Back Box     | 263 |
| 37mm Single Back Box     | 264 |

### 6.2 General LAN Accessories

| Lockable Outlets             |     |
|------------------------------|-----|
| 3 Port LAN Lock Unit         | 264 |
| 6 Port LAN Lock Unit         | 265 |
| LAN Lock Modules             | 265 |
| <b>Cool Port</b>             |     |
| Blue - Data and Voice Ports  | 266 |
| Purple - 2 Data Ports        | 266 |
| Red - Data and Voice Ports   | 267 |
| Yellow - Voice Ports         | 267 |
|                              |     |
| <b>OTHER ACCESSORIES</b>     |     |
| RJ45 Dust Cover              | 268 |
| Sub Floor Box                | 268 |
| HT-TT02 Termination Tool     | 269 |
| MTP Fibre Cleaner            | 269 |
| Fibre Connector Cleaning Pen | 270 |



## Alpha Snap Faceplates

### Double Gang Bevelled

#### Features and Benefits

- Strong, durable ABS plastic
- Accepts up to 4 Alpha Snap Outlets in a double gang
- Offers extra 10mm depth to the back box
- Available in White, Black and Grey
- Supplied with fixing screws
- Can be individually screen printed with custom logo

#### Product Description

The bevelled double faceplate accepts 4 single Alpha Snap modules or 2 triple Alpha Snap modules.

The Alpha Snap Faceplate is made from ABS plastic which is fire retardant and completes any installation with a professional look.



Alpha Snap Bevelled Double Faceplates (shown in White, Black and Grey)

| TYPE      | Height H (mm) | Width W (mm) | Depth D (mm) | Quantity | Colour     | Article-No. |
|-----------|---------------|--------------|--------------|----------|------------|-------------|
| ASFP02/BK | 87.0          | 148.0        | 15.0         | 15       | Black (BK) | 854-35221   |
| ASFP02/GY | 87.0          | 148.0        | 15.0         | 15       | Grey (GY)  | 854-35785   |
| ASFP02/WH | 87.0          | 148.0        | 15.0         | 15       | White (WH) | 854-35101   |

Subject to technical changes.

## Alpha Snap Faceplates

### Single Gang Bevelled

#### Features and Benefits

- Strong, durable ABS plastic
- Accepts up to 2 Alpha Snap Outlets in a single gang
- Offers extra 10mm depth to the back box
- Available in White, Black or Grey
- Supplied with fixing screws
- Can be individually screen printed with custom logo

#### Product Description

The bevelled single faceplate accepts 2 single Alpha Snap modules or 1 triple Alpha Snap module.

The Alpha Snap Faceplate is made from white ABS plastic which is fire retardant and completes any installation with a professional look.



Alpha Snap Bevelled Single Faceplates (shown in White, Black and Grey)

| TYPE      | Height H (mm) | Width W (mm) | Depth D (mm) | Quantity | Colour     | Article-No. |
|-----------|---------------|--------------|--------------|----------|------------|-------------|
| ASFP01/BK | 87.0          | 87.0         | 15.0         | 20       | Black (BK) | 854-35198   |
| ASFP01/GY | 87.0          | 87.0         | 15.0         | 20       | Grey (GY)  | 854-35784   |
| ASFP01/WH | 87.0          | 87.0         | 15.0         | 20       | White (WH) | 854-35202   |

Subject to technical changes.



### Alpha Snap Faceplates

#### Double Gang Flat

#### Features and Benefits

- Strong, durable ABS plastic
- Accepts up to 4 Alpha Snap Outlets in a double gang
- Supplied with fixing screws
- Can be individually screen printed with custom logo

#### Product Description

The flat double faceplate accepts 4 single Alpha Snap modules or 2 triple Alpha Snap modules.

The Alpha Snap Faceplate is made from white ABS plastic which is fire retardant and completes any installation with a professional look.



Alpha Snap Flat Double Faceplates

| TYPE       | Height H (mm) | Width W (mm) | Depth D (mm) | Quantity | Colour     | Article-No. |
|------------|---------------|--------------|--------------|----------|------------|-------------|
| ASFP02F/WH | 86.0          | 147.0        | 10.0         | 22       | White (WH) | 854-35224   |

Subject to technical changes.

### Alpha Snap Faceplates

#### Single Gang Flat

#### Features and Benefits

- Strong, durable ABS plastic
- Accepts up to 2 Alpha Snap Outlets in a single gang
- Supplied with fixing screws
- Can be individually screen printed with custom logo

#### Product Description

The flat single faceplate accepts 2 single Alpha Snap modules or 1 triple Alpha Snap module.

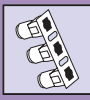
The Alpha Snap Faceplate is made from white ABS plastic which is fire retardant and completes any installation with a professional look.



Alpha Snap Flat Single Faceplates

| TYPE       | Height H (mm) | Width W (mm) | Depth D (mm) | Quantity | Colour     | Article-No. |
|------------|---------------|--------------|--------------|----------|------------|-------------|
| ASFP01F/WH | 86.0          | 86.0         | 10.0         | 25       | White (WH) | 854-35210   |

Subject to technical changes.



## Easy Clip Faceplates

### Double Gang Bevelled

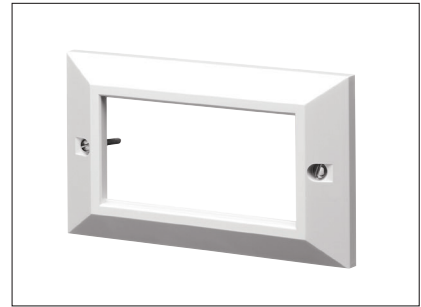
#### Features and Benefits

- Strong, durable ABS plastic
- Accepts up to 4 Easy Clip Outlets in a double gang
- Supplied with fixing screws
- Can be individually screen printed with custom logo

#### Product Description

The bevelled double faceplate accepts 4 single Easy Clip Modules.

The Easy Clip faceplate is made from white ABS plastic which is fire retardant and completes any installation with a professional look.



Easy Clip Bevelled Double Faceplates

| TYPE       | Height H (mm) | Width W (mm) | Depth D (mm) | Quantity | Colour     | Article-No. |
|------------|---------------|--------------|--------------|----------|------------|-------------|
| ECFP02B/WH | 86.0          | 147.0        | 10.0         | 15       | White (WH) | 854-35775   |

Subject to technical changes.

## Easy Clip Faceplates

### Single Gang Bevelled

#### Features and Benefits

- Strong, durable ABS plastic
- Accepts up to 2 Easy Clip Outlets in a single gang
- Supplied with fixing screws
- Can be individually screen printed with custom logo

#### Product Description

The bevelled single faceplate accepts 2 single Easy Clip Modules.

The Easy Clip faceplate is made from white ABS plastic which is fire retardant and completes any installation with a professional look.



Easy Clip Bevelled Single Faceplates

| TYPE       | Height H (mm) | Width W (mm) | Depth D (mm) | Quantity | Colour     | Article-No. |
|------------|---------------|--------------|--------------|----------|------------|-------------|
| ECFP01B/WH | 86.0          | 86.0         | 10.0         | 22       | White (WH) | 854-35774   |

Subject to technical changes.



### Easy Clip Faceplates

#### Double Gang Bevelled

#### Features and Benefits

- Strong, durable ABS plastic
- Accepts up to 4 Easy Clip Outlets in a double gang
- Supplied with fixing screws
- Can be individually screen printed with custom logo

#### Product Description

The double faceplate accepts 4 single Easy Clip modules.

The Easy Clip Faceplate is made from white ABS plastic which is fire retardant and completes any installation with a professional look.



Easy Clip Flat Double Faceplates

| TYPE      | Height H (mm) | Width W (mm) | Depth D (mm) | Quantity | Colour     | Article-No. |
|-----------|---------------|--------------|--------------|----------|------------|-------------|
| ECFP02/WH | 86.0          | 147.0        | 10.0         | 22       | White (WH) | 854-35321   |

Subject to technical changes.

### Easy Clip Faceplates

#### Single Gang Flat

#### Features and Benefits

- Strong, durable ABS plastic
- Accepts up to 2 Easy Clip Outlets in a single gang
- Supplied with fixing screws
- Can be individually screen printed with custom logo

#### Product Description

The single faceplate accepts 2 single Easy Clip modules.

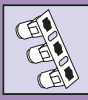
The Easy Clip Faceplate is made from white ABS plastic which is fire retardant and completes any installation with a professional look.



Easy Clip Flat Single Faceplates

| TYPE      | Height H (mm) | Width W (mm) | Depth D (mm) | Quantity | Colour     | Article-No. |
|-----------|---------------|--------------|--------------|----------|------------|-------------|
| ECFP01/WH | 86.0          | 86.0         | 10.0         | 25       | White (WH) | 854-35315   |

Subject to technical changes.



## MegaBand Faceplates

### Double Gang Flat

#### Features and Benefits

- Strong, durable ABS plastic
- Accepts up to 4 MegaBand outlets in a double gang
- Supplied with fixing screws
- Can be individually screen printed with custom logo

#### Product Description

The double faceplate accepts 4 single MegaBand modules, presenting 4 RJ45 outlets.

The MegaBand Faceplate is made from white ABS plastic which is fire retardant and completes any installation with a professional look.



MegaBand Flat Double Faceplates

| TYPE      | Height H (mm) | Width W (mm) | Depth D (mm) | Quantity | Colour     | Article-No. |
|-----------|---------------|--------------|--------------|----------|------------|-------------|
| MBFP02/WH | 86.0          | 147.0        | 10.0         | 22       | White (WH) | 854-35484   |

Subject to technical changes.

## MegaBand Faceplates

### Single Gang Flat

#### Features and Benefits

- Strong, durable ABS plastic
- Accepts up to 2 MegaBand Outlets in a single gang
- Supplied with fixing screws
- Can be individually screen printed with custom logo

#### Product Description

The Single faceplate accepts 2 single MegaBand modules, presenting 2 RJ45 outlets.

The MegaBand Faceplate is made from white ABS plastic which is fire retardant and completes any installation with a professional look.



MegaBand Flat Single Faceplates

| TYPE      | Height H (mm) | Width W (mm) | Depth D (mm) | Quantity | Colour     | Article-No. |
|-----------|---------------|--------------|--------------|----------|------------|-------------|
| MBFP01/WH | 86.0          | 86.0         | 10.0         | 25       | White (WH) | 854-35329   |

Subject to technical changes.



### Alpha Snap Blanks

#### Half Blanks

#### Features and Benefits

- White ABS plastic
- Compatible with Alpha Snap Faceplates
- Half Blank - 50mm x 25mm full module size
- Blank off space within a faceplate

#### Product Description

The Alpha Snap Half Blank fits into both the bevelled and flat Alpha Snap Faceplates, providing a professional finish where any spaces may be left.

The blanks can be simply removed if additional outlets are required in the future.



Alpha Snap Half Blank

| TYPE     | Height H (mm) | Width W (mm) | Depth D (mm) | Quantity | Colour     | Article-No. |
|----------|---------------|--------------|--------------|----------|------------|-------------|
| AS050/WH | 50.0          | 25.0         | 14.0         | 1        | White (WH) | 854-35174   |

Subject to technical changes.

### Alpha Snap Blanks

#### Quarter Blanks

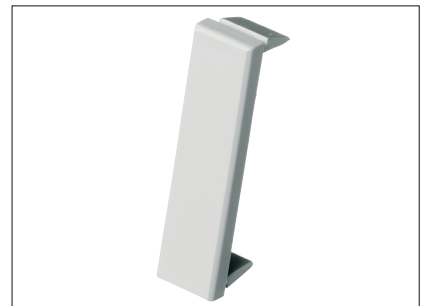
#### Features and Benefits

- White ABS plastic
- Compatible with Alpha Snap Faceplates and modules
- Quarter Blank - 50mm x 12.5mm half module size
- Blank off space within a faceplate

#### Product Description

The Alpha Snap Quarter Blank fits into both the bevelled and flat Alpha Snap Faceplates, providing a professional finish where any spaces may be left.

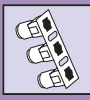
The blanks can be simply removed if additional outlets are required in the future.



Alpha Snap Quarter Blank

| TYPE     | Height H (mm) | Width W (mm) | Depth D (mm) | Quantity | Colour     | Article-No. |
|----------|---------------|--------------|--------------|----------|------------|-------------|
| AS025/WH | 50.0          | 12.5         | 14.0         | 1        | White (WH) | 854-35172   |

Subject to technical changes.



## Easy Clip Blanks

### Half Blanks

#### Features and Benefits

- White ABS plastic
- Compatible with Easy Clip Faceplates
- Half Blank - 50mm x 25mm full module size
- Blank off space within a faceplate

#### Product Description

The Easy Clip Half Blank fits into the Easy Clip Faceplates, providing a professional finish where any spaces may be left.

The blanks can be simply removed if additional outlets are required in the future.



Easy Clip Half Blank

| TYPE     | Height H (mm) | Width W (mm) | Depth D (mm) | Quantity | Colour     | Article-No. |
|----------|---------------|--------------|--------------|----------|------------|-------------|
| EC050/WH | 50.0          | 25.0         | 14.0         | 1        | White (WH) | 854-35309   |

Subject to technical changes.

## Easy Clip Blanks

### Quarter Blanks

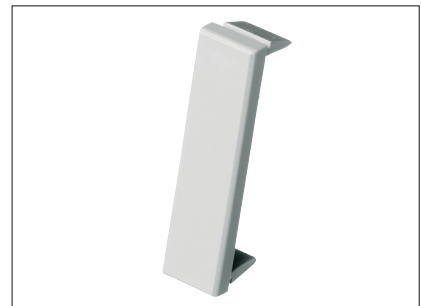
#### Features and Benefits

- White ABS plastic
- Compatible with Easy Clip Faceplates
- Quarter Blank - 50mm x 12.5mm half module size
- Blank off space within a faceplate

#### Product Description

The Easy Clip Quarter Blank fits into the Easy Clip Faceplates, providing a professional finish where any spaces may be left.

The blanks can be simply removed if additional outlets are required in the future.



Easy Clip Quarter Blank

| TYPE     | Height H (mm) | Width W (mm) | Depth D (mm) | Quantity | Colour     | Article-No. |
|----------|---------------|--------------|--------------|----------|------------|-------------|
| EC025/WH | 50.0          | 12.5         | 14.0         | 1        | White (WH) | 854-35753   |

Subject to technical changes.





### MegaBand Blanks

#### Half Blanks

#### Features and Benefits

- White ABS plastic
- Compatible with MegaBand Faceplates
- Half Blank - 50mm x 25mm full module size
- Blank off space within a faceplate

#### Product Description

The MegaBand Half Blank fits into the MegaBand Faceplates, providing a professional finish where any spaces may be left.

The blanks can be simply removed if additional outlets are required in the future.



MegaBand Half Blank

| TYPE     | Height H (mm) | Width W (mm) | Depth D (mm) | Quantity | Colour     | Article-No. |
|----------|---------------|--------------|--------------|----------|------------|-------------|
| MB050/WH | 50.0          | 25.0         | 14.0         | 1        | White (WH) | 854-35482   |

Subject to technical changes.

### MegaBand Blanks

#### Quarter Blanks

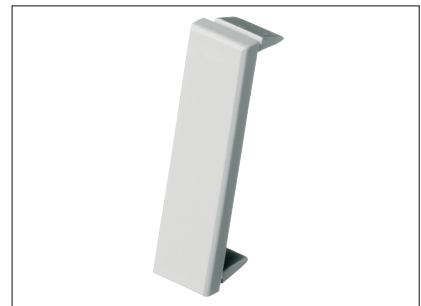
#### Features and Benefits

- White ABS plastic
- Compatible with MegaBand Faceplates
- Quarter Blank - 50mm x 12.5mm half module size
- Blank off space within a faceplate

#### Product Description

The MegaBand Quarter Blank fits into the MegaBand Faceplates, providing a professional finish where any spaces may be left.

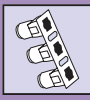
The blanks can be simply removed if additional outlets are required in the future.



MegaBand Quarter Blank

| TYPE     | Height H (mm) | Width W (mm) | Depth D (mm) | Quantity | Colour     | Article-No. |
|----------|---------------|--------------|--------------|----------|------------|-------------|
| MB025/WH | 50.0          | 12.5         | 14.0         | 1        | White (WH) | 854-35481   |

Subject to technical changes.



## 6C Blanks

### Blank

#### Features and Benefits

- White ABS plastic
- Compatible with 6C sized faceplates and outlet apertures
- Blank - 50mm x 25mm full module size
- Blanks off space within a faceplate

#### Product Description

The 6C Blank fits into standard LJ6C dimension mounting apertures, providing a professional finish where any spaces may be left.

The blank can be simply removed if additional outlets are required in the future.



6C Blank

| TYPE  | Height H (mm) | Width W (mm) | Depth D (mm) | Quantity | Colour     | Article-No. |
|-------|---------------|--------------|--------------|----------|------------|-------------|
| 6C050 | 38.0          | 25.0         | 11.0         | 1        | White (WH) | 852-30005   |

Subject to technical changes.

## 6C Adaptors

### 6C to Alpha Snap Adaptor

#### Features and Benefits

- White ABS plastic
- Accepts 2 x LJ6C Outlets
- Snaps into all Alpha Snap Faceplates
- Can also be used with Angled 6C Outlets

#### Product Description

The 6C Adaptor allows 6C sized outlets and modules to be used in the HellermannTyton Alpha Snap Faceplates and sub floor boxes.

The 6C Adaptor provides space for 2 6C modules.



Alpha Snap 6C Adaptor

| TYPE       | Height H (mm) | Width W (mm) | Depth D (mm) | Quantity | Colour     | Article-No. |
|------------|---------------|--------------|--------------|----------|------------|-------------|
| 6C-ADAPTER | 50.0          | 50.0         | 8.0          | 1        | White (WH) | 854-35121   |

Subject to technical changes.



### GigaBand Category 6

#### Empty Single Coloured Modules

#### Features and Benefits

- Replacement cover for GigaBand Modules
- Patented slide label system
- 5 Colour options available
- Labelling software available

# 6

#### Product Description

The replacement cover for the GigaBand module can be used if the original cover has been damaged.

The GigaBand Outlet forms part of the premium Category 6 GigaBand product range from HellermannTyton. The individual modular design of the GigaBand system allows for uncompromised performance and quality.

GigaBand modules are available in standard (25mm x 50mm) size.



GigaBand Category 6 Coloured Modules

| TYPE     | Performance Category | Height H (mm) | Width W (mm) | Depth D (mm) | Port count | Quantity | Colour     | Article-No. |
|----------|----------------------|---------------|--------------|--------------|------------|----------|------------|-------------|
| ASPM6/BK | Category 6 (Class E) | 50.0          | 25.0         | 34.0         | 1          | 1        | Black (BK) | 852-05599   |
| ASPM6/BL | Category 6 (Class E) | 50.0          | 25.0         | 34.0         | 1          | 1        | Blue (BU)  | 852-05600   |
| ASPM6/GN | Category 6 (Class E) | 50.0          | 25.0         | 34.0         | 1          | 1        | Green (GN) | 852-05601   |
| ASPM6/RD | Category 6 (Class E) | 50.0          | 25.0         | 34.0         | 1          | 1        | Red (RD)   | 852-05602   |
| ASPM6/WH | Category 6 (Class E) | 50.0          | 25.0         | 34.0         | 1          | 1        | White (WH) | 852-05326   |

Subject to technical changes.

### Alpha Snap Category 5e

#### Empty Single Coloured Modules

#### Features and Benefits

- Replacement cover for AlphaSnap Modules
- Patented slide label system
- 5 colour options available
- Labelling software available

# 5e

#### Product Description

The replacement cover for the Alpha Snap module can be used if the original cover has been damaged.

Alpha Snap is the leading Category 5e product group within the HellermannTyton cabling system product range. Designed to offer exceptional Category 5e performance and to meet the exacting standards of mission critical installations.

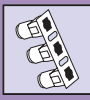
The Alpha Snap modules are available in standard (25mm x 50mm) size.



Alpha Snap Category 5e Coloured Modules

| TYPE     | Performance Category  | Height H (mm) | Width W (mm) | Depth D (mm) | Port count | Quantity | Colour     | Article-No. |
|----------|-----------------------|---------------|--------------|--------------|------------|----------|------------|-------------|
| ASPM5/BK | Category 5E (Class D) | 50.0          | 25.0         | 34.0         | 1          | 1        | Black (BK) | 852-05615   |
| ASPM5/BL | Category 5E (Class D) | 50.0          | 25.0         | 34.0         | 1          | 1        | Blue (BU)  | 852-05616   |
| ASPM5/GN | Category 5E (Class D) | 50.0          | 25.0         | 34.0         | 1          | 1        | Green (GN) | 852-05617   |
| ASPM5/RD | Category 5E (Class D) | 50.0          | 25.0         | 34.0         | 1          | 1        | Red (RD)   | 852-05618   |
| ASPM5/WH | Category 5E (Class D) | 50.0          | 25.0         | 34.0         | 1          | 1        | White (WH) | 852-05614   |

Subject to technical changes.



## Easy Clip Modules

### Angled Modules

#### Features and Benefits

- Angled design allows for patch lead bend management in floor box applications
- Minimal depth in front of module
- Accepts HellermannTyton Category 6A, Category 6 and Category 5e GST Jacks as well as Deca<sup>10</sup> Shielded Jacks
- Shuttered to ensure dust free operation
- Labelling field

#### Product Description

The Easy Clip angled module is a low profile module that has been developed to give the user a reliable cabling outlet that reduces the space required both in front and behind the outlet.

Designed for use in the floor box to prevent crushing of the patch lead as it exits the outlet, it is equally at home in a wall or desk outlet. The Easy Clip angled module fits into all Easy Clip Face plates.



Easy Clip Angled Module

| TYPE          | Height H (mm) | Width W (mm) | Depth D (mm) | Quantity | Colour     | Article-No. |
|---------------|---------------|--------------|--------------|----------|------------|-------------|
| EC-ANG-PMO/WH | 50.0          | 25.0         | 27.0         | 1        | White (WH) | 854-39399   |

Subject to technical changes.

## 6C Modules

### Angled Modules

#### Features and Benefits

- Angled design allows for patch lead bend management in floor box applications
- Minimal depth in front of module
- Accepts HellermannTyton Category 6A, Category 6 and Category 5e GST Jacks as well as Deca<sup>10</sup> Shielded Jacks
- Shuttered to ensure dust free operation
- Labelling field

#### Product Description

The 6C angled module is a low profile module that has been developed to give the user a reliable cabling outlet that reduces the space required both in front and behind the outlet.

Designed for use in the floor box to prevent crushing of the patch lead as it exits the outlet, it is equally at home in a wall or desk outlet. The 6C angled module fits into all industry standard U6C outlet apertures.



6C Angled Module

| TYPE          | Height H (mm) | Width W (mm) | Depth D (mm) | Quantity | Colour     | Article-No. |
|---------------|---------------|--------------|--------------|----------|------------|-------------|
| 6C-ANG-PMO/WH | 38.0          | 25.0         | 20.0         | 1        | White (WH) | 852-30047   |

Subject to technical changes.



### Back Boxes

#### 27mm Single

#### Features and Benefits

- White ABS plastic
- Surface mountable
- Multiple cable entry points

#### Product Description

The Single Back Box is designed to work with all single face plates. The back box is wall mountable and has multiple punch-out cable entry points.



Single 27mm Back Box

| TYPE           | Height H (mm) | Width W (mm) | Depth D (mm) | Quantity | Colour     | Article-No. |
|----------------|---------------|--------------|--------------|----------|------------|-------------|
| ASBB01-27MM/WH | 86.0          | 86.0         | 27.0         | 1        | White (WH) | 854-35181   |

Subject to technical changes.

### Back Boxes

#### 37mm Double

#### Features and Benefits

- ABS plastic
- Surface mountable
- Multiple cable entry points
- Deeper box for added cable protection

#### Product Description

The Double Back Box is designed to work with all double face plates. The back box is wall mountable and has multiple punch-out cable entry points.

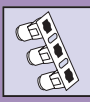
The deeper box allows more room for cable, providing better protection and space for optimum bend radius.



Double 37mm Back Box

| TYPE           | Height H (mm) | Width W (mm) | Depth D (mm) | Quantity | Colour     | Article-No. |
|----------------|---------------|--------------|--------------|----------|------------|-------------|
| ASBB02-37MM/WH | 86.0          | 147.0        | 37.0         | 1        | White (WH) | 854-35187   |

Subject to technical changes.



## Back Boxes

### 37mm Single

#### Features and Benefits

- ABS plastic
- Surface mountable
- Multiple cable entry points
- Deeper box for added cable protection

#### Product Description

The single back box is designed to work with all single face plates. The back box is wall mountable and has multiple punch-out cable entry points.

The deeper box allows more room for cable, providing better protection and space for optimum bend radius.



Single 37mm Back Box

| TYPE           | Height H (mm) | Width W (mm) | Depth D (mm) | Quantity | Colour     | Article-No. |
|----------------|---------------|--------------|--------------|----------|------------|-------------|
| ASBB01-37MM/WH | 86.0          | 86.0         | 37.0         | 1        | White (WH) | 854-35183   |

Subject to technical changes.

## Lockable Outlets

### 3 Port LAN Lock Unit

#### Features and Benefits

- Surface Mountable
- Internal patch lead fixing point or 6 port configuration
- Supplied unloaded
- Category 6 and Category 5e modules available
- Tamper proof screw option

#### Product Description

The LAN Lock unit is designed to prevent unauthorised patch lead removal. It is the ideal solution for any areas with public access, for example hospitals, schools, reception areas or any place where network security is a concern.

The LAN Lock is available in a 3 or 6 port configuration, it can be easily mounted on to most surfaces and utilises HellermannTyton's 16 and 25mm trunking adaptors.



3 Port LAN Lock Unit

| TYPE        | Height H (mm) | Width W (mm) | Depth D (mm) | Port count | Quantity | Colour     | Article-No. |
|-------------|---------------|--------------|--------------|------------|----------|------------|-------------|
| LL03U/WH/WH | 25.0          | 86.0         | 120.0        | 3          | 1        | White (WH) | 854-35460   |

Subject to technical changes.

#### Technical Description

The two part low profile casing is moulded from sturdy ABS, has a 3 port configuration and incorporates rear cable entry and internal patch lead anchor points.

The unit is sold unloaded and requires HellermannTyton's Category 6 (LLPC08C6) or Category 5e (LLPC08C5E) LAN Lock Modules.

The LAN Lock unit is supplied with fixings suitable for standard back boxes.



### Lockable Outlets

#### 6 Port LAN Lock Unit

#### Features and Benefits

- Surface Mountable
- Internal patch lead fixing point
- 3 or 6 port configuration
- Supplied unloaded
- Category 6 and Category 5e modules available
- Tamper proof screw option

#### Product Description

The LAN Lock unit is designed to prevent unauthorised patch lead removal. It is the ideal solution for any areas with public access, for example hospitals, schools, reception areas or any place where network security is a concern.

The LAN Lock is available in a 3 or 6 port configuration, it can be easily mounted on to most surfaces and utilises HellermannTyton's 16 and 25mm trunking adaptors.



6 Port LAN Lock Unit

| TYPE        | Height H (mm) | Width W (mm) | Depth D (mm) | Port count | Quantity | Colour     | Article-No. |
|-------------|---------------|--------------|--------------|------------|----------|------------|-------------|
| LL06U/WH/WH | 25.0          | 147.0        | 160.0        | 6          | 1        | White (WH) | 854-35465   |

Subject to technical changes.

#### Technical Description

The two part low profile casing is moulded from sturdy ABS, has a 6 port configuration and incorporates rear cable entry and internal patch lead anchor points.

The unit is sold unloaded and requires HellermannTyton's Category 6 LLPC08C6 or Category 5e (LLPC08C5E) LAN Lock Modules.

The LAN Lock unit is supplied with fixings suitable for standard back boxes.

### Lockable Outlets

#### LAN Lock Modules

#### Features and Benefits

- Compatible with 3 & 6 Port Lan Lock Units
- Category 6 and Category 5e versions
- Supplied Individually

#### Product Description

The Category 6 and Category 5e LAN Lock modules are designed for use with the HellermannTyton LAN Lock units. The modules are sold individually.

The LAN Lock unit is designed to prevent unauthorised patch lead removal. It is the ideal solution for any areas with public access, for example hospitals, schools, reception areas or any place where network security is a concern.

The LAN Lock is available in a 3 or 6 port configuration and can be easily mounted on to most surfaces.



Category 5e and Category 6 LAN Lock Modules

| TYPE      | Performance Category  | Height H (mm) | Width W (mm) | Depth D (mm) | Quantity | Colour     | Article-No. |
|-----------|-----------------------|---------------|--------------|--------------|----------|------------|-------------|
| LLPC08C5E | Category 5E (Class D) | 22.0          | 27.0         | 49.0         | 1        | Black (BK) | 852-35118   |
| LLPC08C6  | Category 6 (Class E)  | 22.0          | 27.0         | 49.0         | 1        | Black (BK) | 852-35119   |

Subject to technical changes.

#### Technical Description

The LAN Lock module clips into the LAN Lock unit. The individual PCB modules provide an RJ45 port with an IDC punch down block. The modules also have a wiring guide to ensure correct connections.

The Lan Lock modules are tested to exceed the latest published versions of ISO/IEC 11801, BS/EN50173 and ANSI/TIA/EIA 568-C Category 6.



## General LAN Accessories

### Coolport Blue - Data and Voice Ports

#### Features and Benefits

- Data and Voice Connectivity
- Plug and Play Installation
- Enables quick equipment deployment in disaster recovery situations
- Provides simple and effective additional capacity
- Sleek, modern design

#### Product Description

The Coolport is designed to provide an instant method for adding more devices to a single cable port – ideal in emergency situations where not enough network outlets are available or when cost or disruption caused by installing additional cabling is prohibitive.



Coolport Blue - Data and Voice

| TYPE            | Height H (mm) | Width W (mm) | Depth D (mm) | Quantity | Colour    | Article-No. |
|-----------------|---------------|--------------|--------------|----------|-----------|-------------|
| CP3/1DA/2DV     | 40.0          | 60.0         | 69.0         | 1        | Blue (BU) | 852-35080   |
| CP3/1DA/2DV KIT | 40.0          | 60.0         | 69.0         | 2        | Blue (BU) | 852-35081   |

Subject to technical changes.

#### Technical Description

The Blue Coolport is a 3 port outlet (1 x data and 2 x voice) which connects to one 4 pair cable. All devices are then continuously available.

Easily mounted on to a desk or wall, Coolports are supplied singularly or in pairs as a kit including patch leads.

A Coolport is required at both the work area and patch panel.

## General LAN Accessories

### Coolport Purple - 2 Data Ports

#### Features and Benefits

- 2 x Data Connectivity
- Plug and Play Installation
- Enables quick equipment deployment in disaster recovery situations
- Provides simple and effective additional capacity
- Sleek, modern design

#### Product Description

The Coolport is designed to provide an instant method for adding more devices to a single cable port – ideal in emergency situations where not enough network outlets are available or when cost or disruption caused by installing additional cabling is prohibitive.



Coolport Purple - Data

| TYPE        | Height H (mm) | Width W (mm) | Depth D (mm) | Quantity | Colour      | Article-No. |
|-------------|---------------|--------------|--------------|----------|-------------|-------------|
| CP2/2DA     | 40.0          | 60.0         | 69.0         | 1        | Purple (PE) | 852-35078   |
| CP2/2DA KIT | 40.0          | 60.0         | 69.0         | 2        | Purple (PE) | 852-35079   |

Subject to technical changes.

#### Technical Description

The Purple Coolport is a 2 port outlet (2 x data) which connects to one 4 pair cable. All devices are then continuously available.

Easily mounted on to a desk or wall, Coolports are supplied singularly or in pairs as a kit including patch leads.

A Coolport is required at both the work area and patch panel.





## General LAN Accessories

### Coolport Red - Data and Voice Ports

#### Features and Benefits

- Data and Voice Connectivity
- Plug and Play Installation
- Enables quick equipment deployment in disaster recovery situations
- Provides simple and effective additional capacity
- Sleek, modern design

#### Product Description

The Coolport is designed to provide an instant method for adding more devices to a single cable port – ideal in emergency situations where not enough network outlets are available or when cost or disruption caused by installing additional cabling is prohibitive.



Coolport Red - Data and Voice

| TYPE            | Height H (mm) | Width W (mm) | Depth D (mm) | Quantity | Colour   | Article-No. |
|-----------------|---------------|--------------|--------------|----------|----------|-------------|
| CP2/1DA/1AV     | 40.0          | 60.0         | 69.0         | 1        | Red (RD) | 852-35076   |
| CP2/1DA/1AV KIT | 40.0          | 60.0         | 69.0         | 2        | Red (RD) | 852-35077   |

Subject to technical changes.

#### Technical Description

The Red Coolport is a 2 port outlet (1 x data and 1 x voice) which connects to one 4 pair cable. All devices are then continuously available.

Easily mounted on to a desk or wall, Coolports are supplied singularly or in pairs as a kit including patch leads.

A Coolport is required at both the work area and patch panel.

## General LAN Accessories

### Coolport Yellow - Voice Ports

#### Features and Benefits

- 3 x Voice Connectivity
- Plug and Play Installation
- Enables quick equipment deployment in disaster recovery situations
- Provides simple and effective additional capacity
- Sleek, modern design

#### Product Description

The Coolport is designed to provide an instant method for adding more devices to a single cable port – ideal in emergency situations where not enough network outlets are available or when cost or disruption caused by installing additional cabling is prohibitive.



Coolport Yellow - Voice

| TYPE        | Height H (mm) | Width W (mm) | Depth D (mm) | Quantity | Colour      | Article-No. |
|-------------|---------------|--------------|--------------|----------|-------------|-------------|
| CP3/3DV     | 40.0          | 60.0         | 69.0         | 1        | Yellow (YE) | 852-35082   |
| CP3/3DV KIT | 40.0          | 60.0         | 69.0         | 2        | Yellow (YE) | 852-35083   |

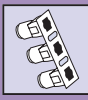
Subject to technical changes.

#### Technical Description

The Yellow Coolport is a 3 port outlet (3 x voice) which connects to one 4 pair cable. All devices are then continuously available.

Easily mounted on to a desk or wall, Coolports are supplied singularly or in pairs as a kit including patch leads.

A Coolport is required at both the work area and patch panel.



## General LAN Accessories

### RJ45 Dust Cover

#### Features and Benefits

- Fits all RJ45 ports
- Protects unused ports from dust and dirt
- Easy to insert and remove in high density applications with swing tab design
- Ideal for expensive active equipment
- Soft rubber material

#### Product Description

The RJ45 Dust Cover protects unused ports on active equipment and patch panels in the data centre or comms room. It fits all RJ45 ports including switches, servers, patch panels and other exposed outlets.



RJ45 Dust Covers

| TYPE   | Height H (mm) | Width W (mm) | Depth D (mm) | Quantity | Colour    | Article-No. |
|--------|---------------|--------------|--------------|----------|-----------|-------------|
| DCMJST | 12.0          | 12.0         | 11.0         | 1        | Blue (BU) | 854-40177   |

Subject to technical changes.

#### Technical Description

Compact and low profile, the RJ45 Dust Cover is ideal for data centre applications such as blade servers. It is easy to insert and remove where space is limited and is made from a soft flexible material, ensuring the Dust Cover stays firmly in position.

## General LAN Accessories

### Sub Floor Box

#### Features and Benefits

- Aluminium extrusion
- Accepts single or triple Alpha Snap Outlets
- Maximum of 12 x RJ45 outlets
- Can be used with 6C adaptor
- Cable knockouts at both ends 20/25mm

#### Product Description

The Sub Floor Box is an attractive easy to assemble design which can present up to 12 RJ45 outlets and is an ideal solution in any area where there is a raised floor.



Alpha Snap Sub Floor Box

| TYPE        | Height H (mm) | Width W (mm) | Depth D (mm) | Quantity | Colour     | Article-No. |
|-------------|---------------|--------------|--------------|----------|------------|-------------|
| AS08/12ESFB | 70.0          | 160.0        | 205.0        | 1        | White (WH) | 854-15035   |

Subject to technical changes.

#### Technical Description

The sub floor box can accommodate up to 4 triple or 8 single Alpha Snap outlets or a mixture of both.

Manufactured from aluminium the sub floor box has cable entry points at both ends which accept a maximum cable diameter of 25mm.



## General LAN Accessories

### HT-TT02 Termination Tool

#### Features and Benefits

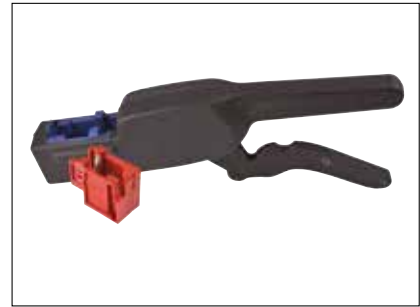
- For use with HellermannTyton GST and Deca<sup>10</sup> Keystone Jacks
- Terminates and crops all 8 cores in one single action
- Single tool required for UTP and FTP terminations
- Interchangeable colour coded UTP (Red) and FTP (Blue) modules
- Quick and easy to use

#### Product Description

The HellermannTyton HT-TT Termination Tool has been specifically designed to terminate the HellermannTyton range of GST and Deca<sup>10</sup> keystone jacks.

The interchangeable colour coded modules mean that a single tool can be used for both UTP and FTP terminations.

The single action operation terminates all 8 conductors and crops any excess cable in a single action helping to ensure the quality and consistency of the connections and reducing installation time.



Termination Tool (shown with FTP and UTP modules)

| TYPE      | Short Description   | Height H (mm) | Width W (mm) | Depth D (mm) | Quantity | Colour     | Article-No. |
|-----------|---|---------------|--------------|--------------|----------|------------|-------------|
| HT-TT02D  | HT-TT Tool supplied with both UTP and FTP termination modules | 155.0         | 270.0        | 50.0         | 1        | Black (BK) | 854-40269   |
| HT-TT02F  | HT-TT Tool supplied with FTP termination module               | 155.0         | 270.0        | 55.0         | 1        | Black (BK) | 854-40268   |
| HT-TT02U  | HT-TT Tool supplied with UTP termination module               | 155.0         | 270.0        | 55.0         | 1        | Black (BK) | 854-40267   |
| HT-TT02JU | Replacement FTP termination module                            | 50.0          | 50.0         | 50.0         | 1        | Red (RD)   | 854-40271   |
| HT-TT02JF | Replacement UTP termination module                            | 50.0          | 50.0         | 50.0         | 1        | Blue (BU)  | 854-40270   |

Subject to technical changes.

#### Technical Description

The HT-TT termination tool is manufactured from 30% glass filled nylon and is available with both FTP and UTP modules or with only an FTP or UTP module.

The interchangeable modules are colour coded for ease of identification. The blades within each module are manufactured from tool grade stainless steel and will perform in excess of 10,000 terminations.

## General LAN Accessories

### MTP Fibre Cleaner

#### Features and Benefits

- Up to 600 cleans per pen
- Cleans both male & female connectors
- Cleans all MTP connector types

#### Product Description

A simple to use cleaning pen which utilises a specially designed lint free, low static ribbon tape to clean dust and debris from both male and female connector types (with & without pins).

Up to 600 cleans from each pen and the design ensures that the complete fibre area is cleaned.



MTP Fibre Cleaning Tool

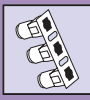
| TYPE           | Short Description           | Quantity | Colour    | Article-No. |
|----------------|-----------------------------|----------|-----------|-------------|
| RNAFXCL-MTCPUS | MTP Fibre Connector Cleaner | 1        | Blue (BU) | 855-15038   |

Subject to technical changes.

#### Technical Description

The head is inserted into the adaptor or the un-mated connector is inserted into the special coupling. The user then turns the wheel on the top and the ribbon rotates to clean the end face.

The special design of the ribbon means that under normal conditions solvents are not required to ensure a clean end face.



## General LAN Accessories

### Fibre Connector Cleaning Pen

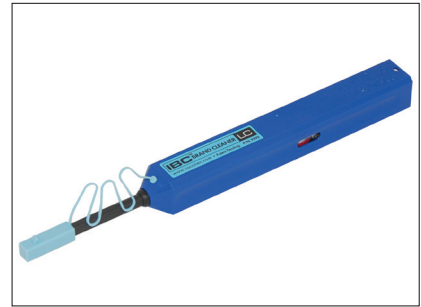
#### Features and Benefits

- Over 500 cleans per pen
- Cleans both male & female connectors
- 1.25mm and 2.5mm ferrule options

#### Product Description

A simple to use cleaning pen which utilises a specially designed lint free, low static ribbon tape to clean dust and debris from both male and female connector types (with & without pins). Over 500 cleans from each pen and the design ensures that the complete fibre area is cleaned.

The end tip rotates while the ribbon is drawn over the face of the connector cleaning the complete face.



LC and SC Fibre Cleaning Pens

| TYPE           | Short Description          | Quantity | Colour    | Article-No. |
|----------------|----------------------------|----------|-----------|-------------|
| RNAFXCL-LCCPUS | LC Fibre Connector Cleaner | 1        | Blue (BU) | 855-15036   |
| RNAFXCL-SCCPUS | SC Fibre Connector Cleaner | 1        | Blue (BU) | 855-15037   |

Subject to technical changes.

#### Technical Description

The head is inserted into the adaptor, or the un-mated connector is inserted into the special coupling, the user presses the body of the cleaner forward until it 'clicks', this pulls the cleaning thread through so it is always clean whilst rotating the head through 180° across the face of the connector.

The special design of the ribbon means that under normal conditions solvents are not required to ensure a clean end face.